

# Simphonē™ Prelude

TrueNorth  
AVIONICS

*Great Call!*

**BUSINESS EMPIRES** Now Taking Flight



## SIMPHONĒ PRELUDE COMPACT AIRBORNE TELEPHONE SYSTEM

With two channels of all-digital, worldwide Iridium® Satcom and TrueNorth's advanced ClearCall™ technology for superior voice quality, the new Simphonē (pronounced "symphony") Prelude is the first compact airborne telephone that grows with your business.

Designed for light jets and turboprops, the single-box Simphonē Prelude incorporates the unique benefits of our "heavy iron" systems, but in a more affordable package. Fully upgradeable, Simphonē Prelude features our future-proof modular design; all-digital architecture; and quiet, easy-to-use, menu-driven handsets which, with our patented noise-reducing technology, give you the quietest, clearest calls in the air.



## SIMPHONĒ PRELUDE FEATURES

An executive-class system, Simphonē Prelude keeps you in touch while you're conquering your business world, with:

- Two all-digital channels of worldwide Iridium® Satcom
- Large, full-color backlit displays for easy readability in any cabin environment
- Open architecture for unlimited networking and growth
- Plug-in expansion modules for cockpit data, Iridium fax, legacy Satcoms and more!

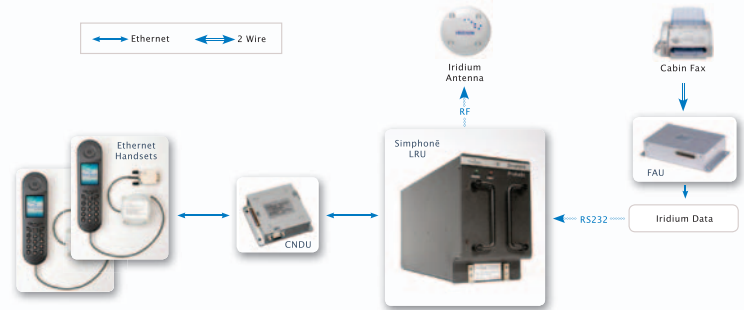
# Simphonē™ Prelude



TrueNorth  
AVIONICS  
*Great Call!*

## SIMPHONĒ PRELUDE SPECIFICATIONS

- **Input Power:** 28VDC (44W maximum)
- **Dimensions:** 4MCU  
(ARINC 600 form factor)
- **Mass:** 11.6 lb. (5.26 Kg)
- **Cooling:** Convection (*inside cabin*)
- **Operating Temperature:**  
LRU, PM: -40°C to +70°C  
CNDU, Handset: -15°C to +55°C
- **Altitude:**  
LRU, PM: 50,000 ft. (15,240 m.)  
CNDU, Handset: 15,000 ft. (4,572 m.)
- **Environmental:** RTCA/DO-160E
- **Software:** RTCA/DO-178B Level E
- **Iridium:** Integrated Dual Iridium Voice and Data
- **Handset:** Full-color, menu-driven display, available in custom colors and materials



## THE SIMPHONĒ DIFFERENCE

In addition, all our Simphonē systems offer these executive-class advantages:

*Advanced ClearCall™ technology for superior voice quality*

*Two built-in channels of worldwide Iridium Satcom*

*Easy-to-use menu-driven handsets*

*Compact, one-box packaging for simple installation*

*“Future-proof” modular architecture for unlimited life and unlimited networking*

*Unmatched personalization options*

*Designed, manufactured and supported by TrueNorth to a higher executive standard*

*Three-year warranty*

TRUENORTH AVIONICS, INC.

141 Bentley Avenue, Suite B • Ottawa, ON K2E 6T7 Canada • [www.truenorthavionics.com](http://www.truenorthavionics.com)

Phone: 613.224.3301 • Toll-free in US & Canada: 877.610.0110 • Fax: 613.224.0954